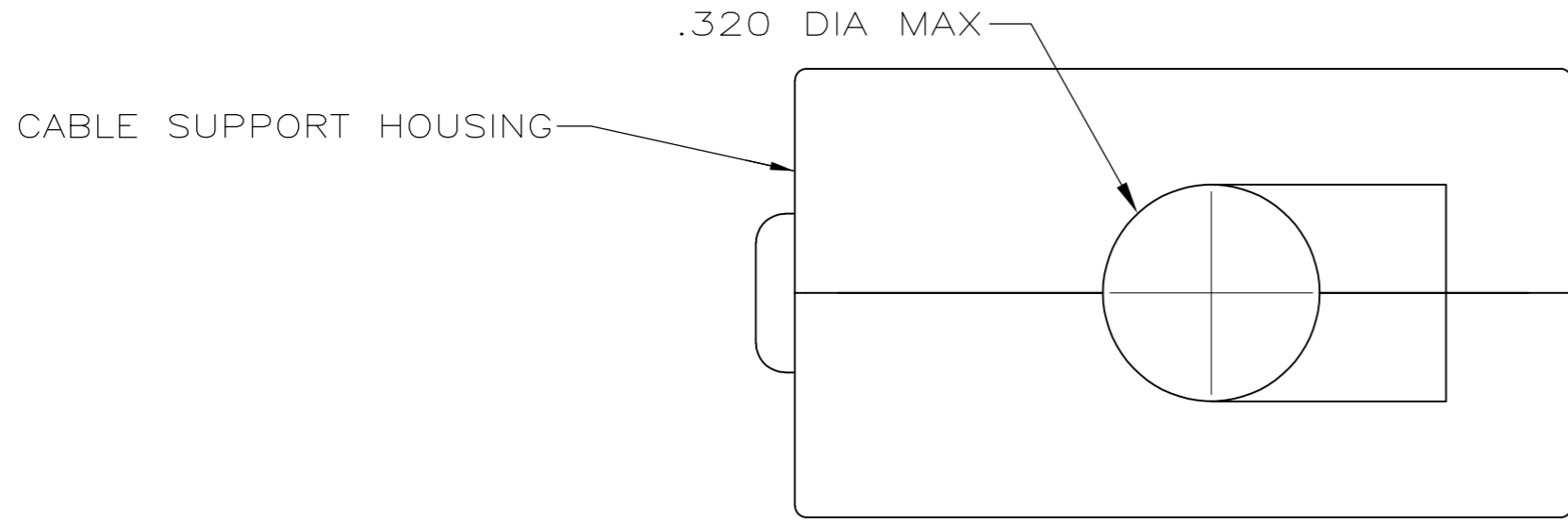
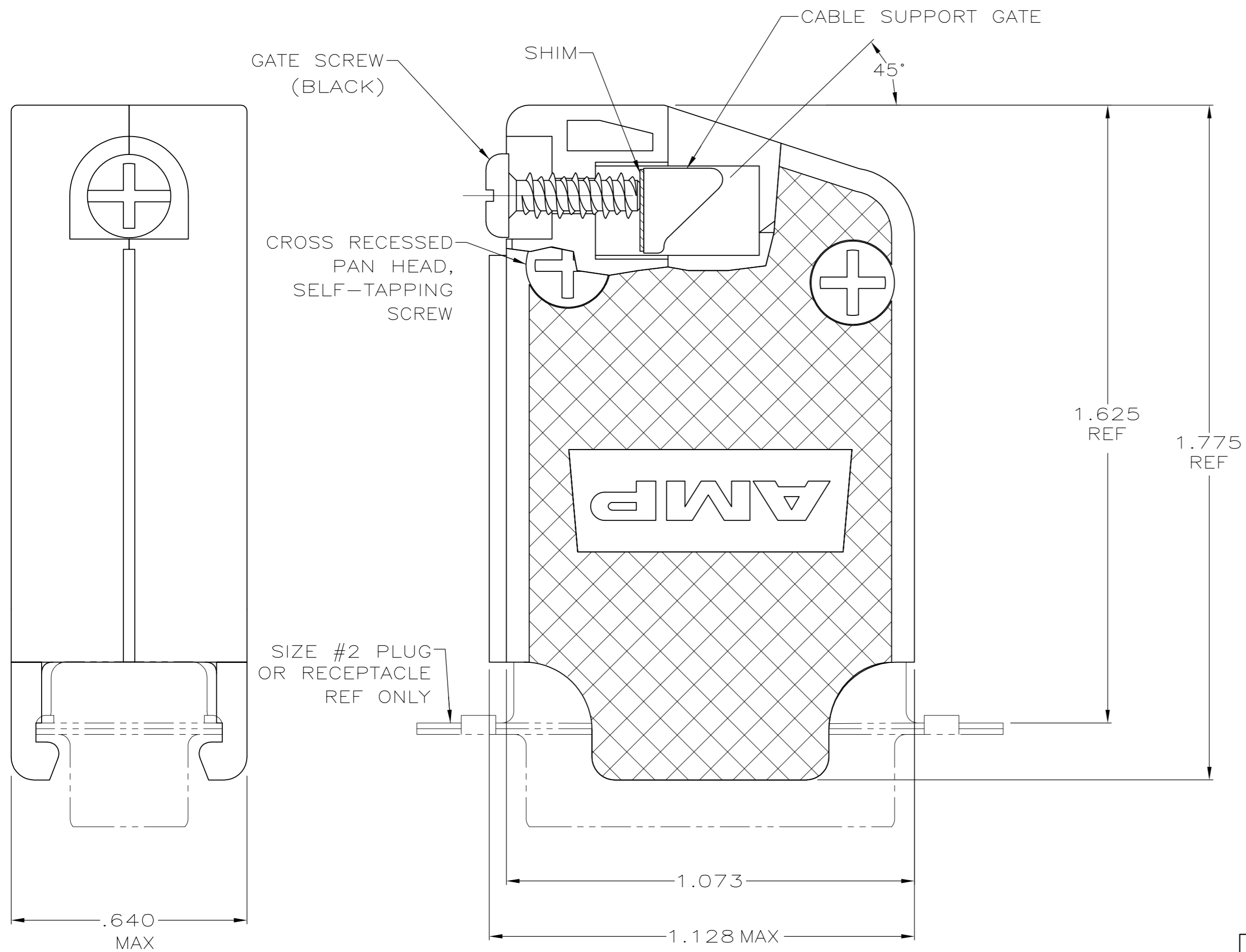


THIS DRAWING IS UNPUBLISHED. RELEASED FOR PUBLICATION  
 © COPYRIGHT 2006 By - ALL RIGHTS RESERVED.

LOC	DIST	REVISIONS					
GP	00	P	LTR	DESCRIPTION	DATE	DWN	APVD
		P		REVISED PER ECO-11-004835	11MAR11	RK	HMR



- PARTS PACKAGED UNASSEMBLED.
  - COMPONENTS INDIVIDUALLY BULK PACKED & SHIPPED AS A UNIT PACKAGE KIT.
- 3 MOLDDED PARTS: POLYPROPYLENE, BLACK.  
SHIM: BRASS.  
SCREWS: COLD ROLLED STEEL.
- 4 GATE SCREWS: BLACK ZINC PROSPHATE  
SELF TAPPING SCREWS: ZINC PLATED CLEAR CHROMATE COATING.



COMBINATION DRIVE	2	5205730-3
COMBINATION DRIVE	AS SHOWN	5205730-1
SCREW VERSION	PACKAGING	PART NO

THIS DRAWING IS A CONTROLLED DOCUMENT.		DWN R.RICHARDSON 30AUG05																		
DIMENSIONS: INCHES		CHK C. ROHDE 30AUG05																		
TOLERANCES UNLESS OTHERWISE SPECIFIED:		APVD M.WALMSLEY 30AUG05																		
<table border="1"> <tr><td>0 PLC</td><td>±</td><td>-</td></tr> <tr><td>1 PLC</td><td>±</td><td>-</td></tr> <tr><td>2 PLC</td><td>±</td><td>-</td></tr> <tr><td>3 PLC</td><td>±</td><td>.005</td></tr> <tr><td>4 PLC</td><td>±</td><td>-</td></tr> <tr><td>ANGLES</td><td>±</td><td>-</td></tr> </table>		0 PLC			±	-	1 PLC	±	-	2 PLC	±	-	3 PLC	±	.005	4 PLC	±	-	ANGLES	±
0 PLC	±	-																		
1 PLC	±	-																		
2 PLC	±	-																		
3 PLC	±	.005																		
4 PLC	±	-																		
ANGLES	±	-																		
MATERIAL	FINISH	PRODUCT SPEC	APPLICATION SPEC	WEIGHT	SIZE	CAGE CODE	DRAWING NO	RESTRICTED TO												
3	4	-	-	-	A2	00779	C=5205730	-												
CUSTOMER DRAWING					SCALE	SHEET	REV													
					4:1	1 of 1	P													